

# Knowledge exchange WUR, Aarhus University & ILVO

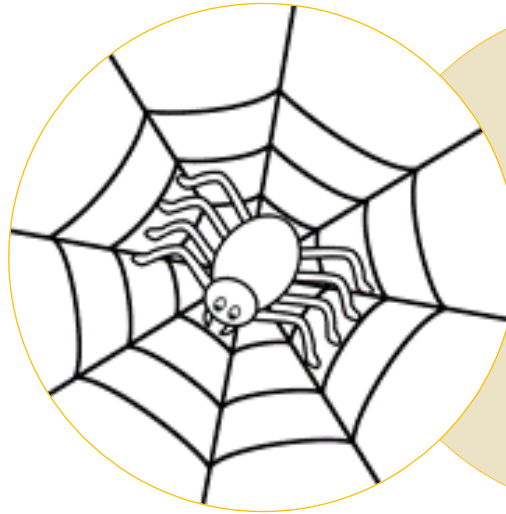
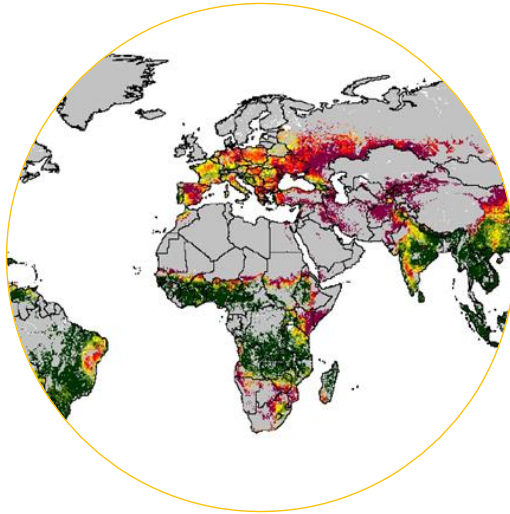
ILVO, Merelbeke/Hansbeke, 29 September 2022





## Agroecology and agroforestry within BU AGRO

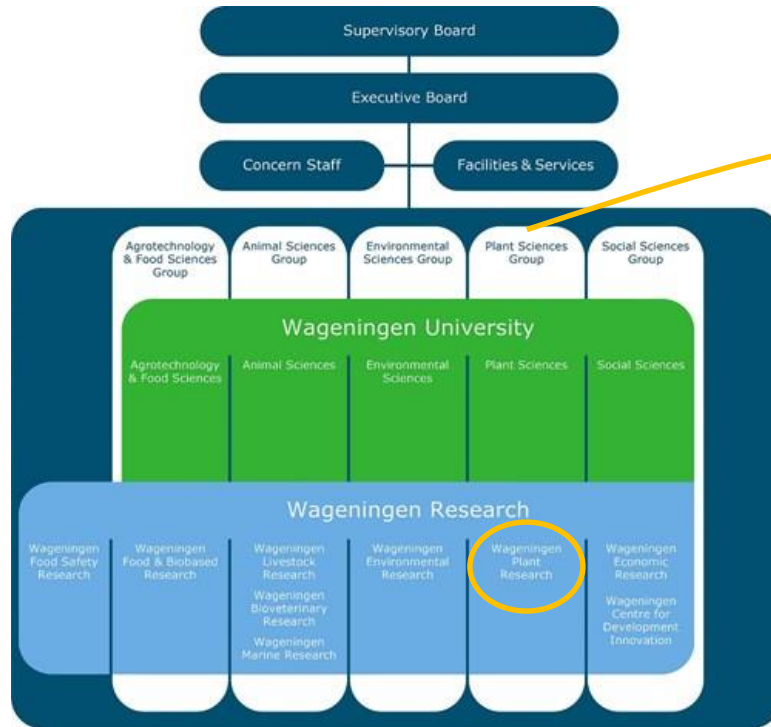
ILVO 29 September 2022



Mission WUR:  
'To explore  
the potential  
of nature to  
improve the  
quality of  
life.'



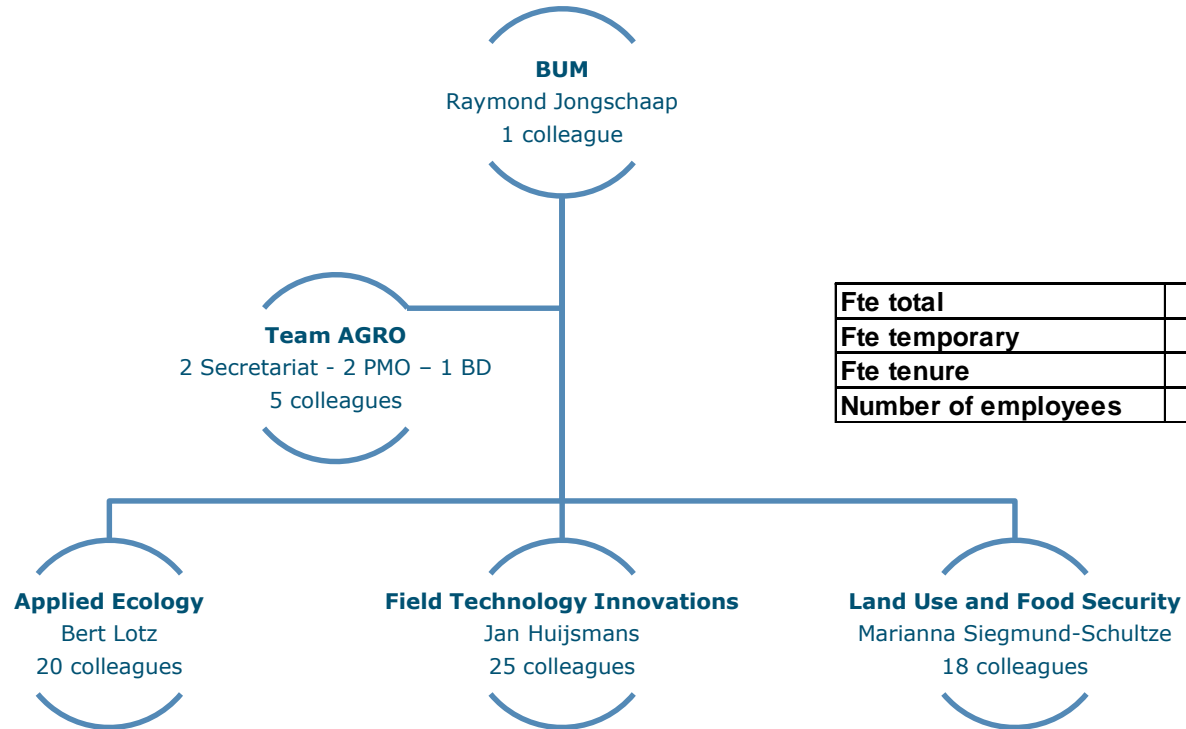
# Structure of WUR – where to find us



PSG:  
7 business units (in WPR)  
and 18 chair groups

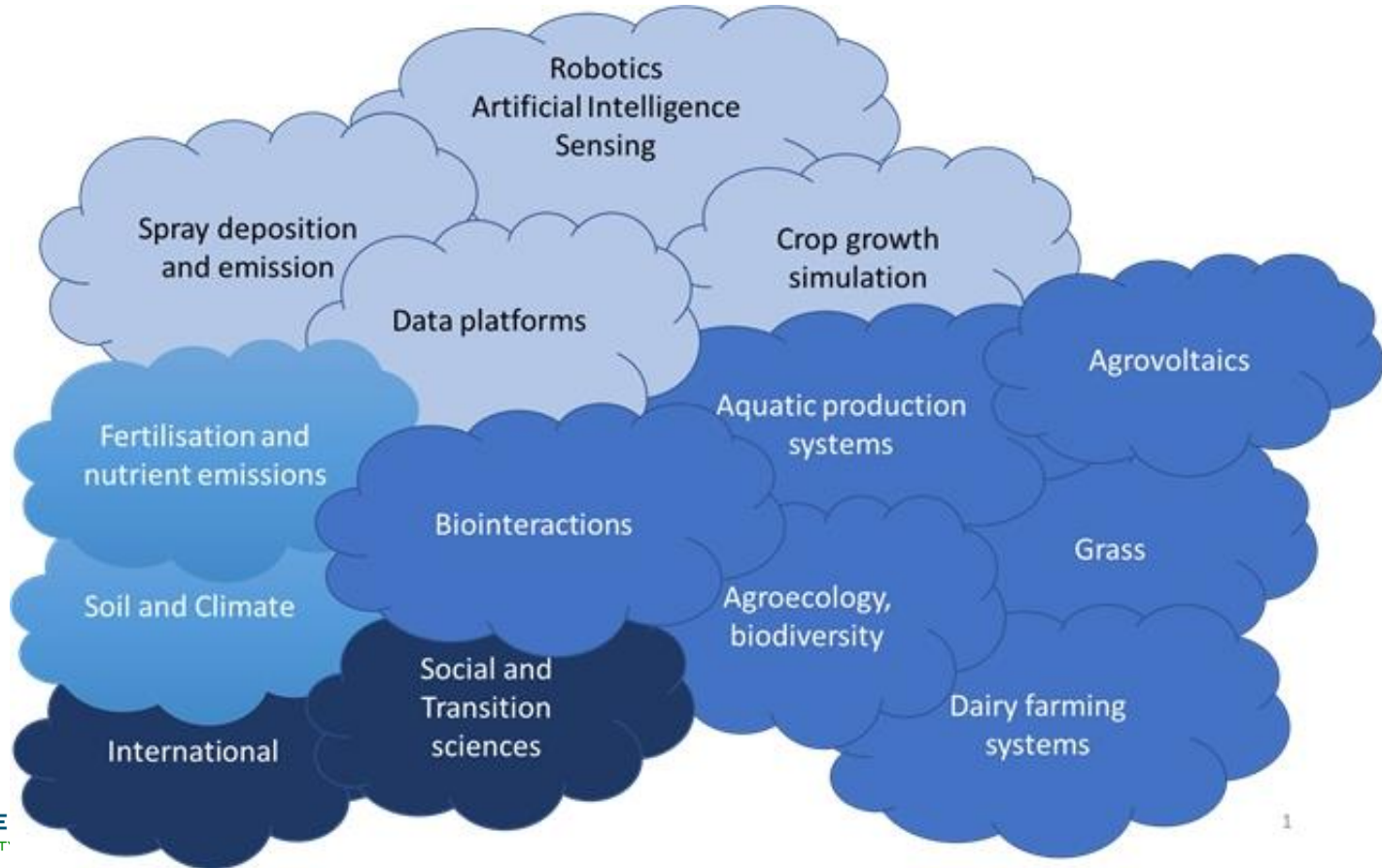
We are **BU AGRO**  
(business unit Agrosystems  
Research)

# AGRO line organisation in teams



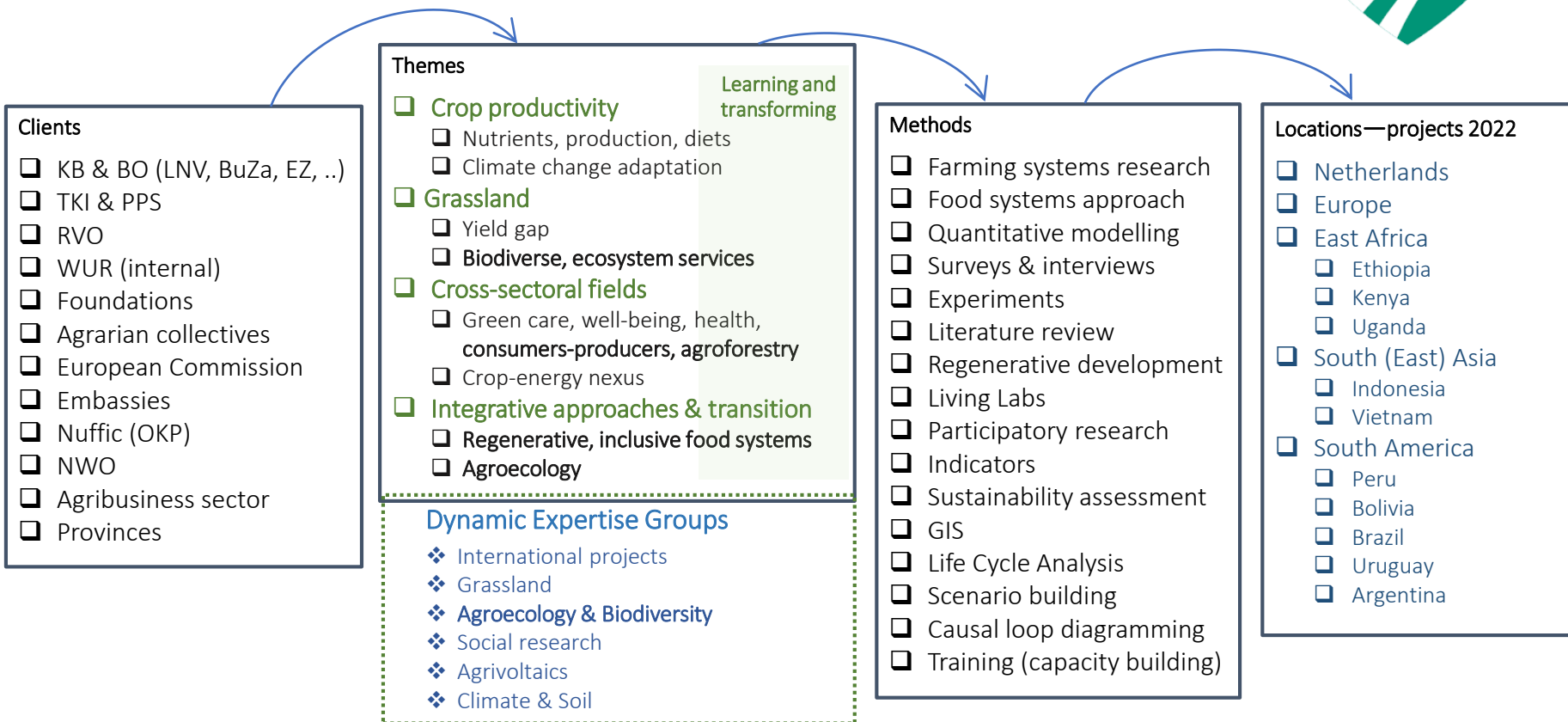
<b>Fte total</b>	<b>64.5</b>	<b>100.0%</b>
<b>Fte temporary</b>	<b>16.3</b>	<b>25.3%</b>
<b>Fte tenure</b>	<b>48.2</b>	<b>74.7%</b>
<b>Number of employees</b>	<b>68</b>	

# The Brains of AGRO: Dynamic Expertise Groups



# Check in for LUF

Portfolio of the Land Use and Food Security team at AGRO (as of Sep 2022)



# Examples of AGRO projects related to agroforestry and agroecology: current and pipeline

- AE4EU
- EU4Advice
- SoilValues
- Transition to a sustainable food system
- PPP regenerative farming
- PPP nice blooming healthy cows
- SENSE: Synergies in integrated [silvo-pastoral] systems
- Ossekampen – grassland long-term experiment
- REFOOTURE: living labs for regenerative, inclusive food systems
- Re-Gen-L, NGF Proposal Regenerative Agriculture
- Knowledge Network Agroecology: connecting farmers and researchers



# Projects/acquisition Silvopasture

Setting a research agenda

Finding appropriate calls

Linking pioneers in North-  
Western Europe

